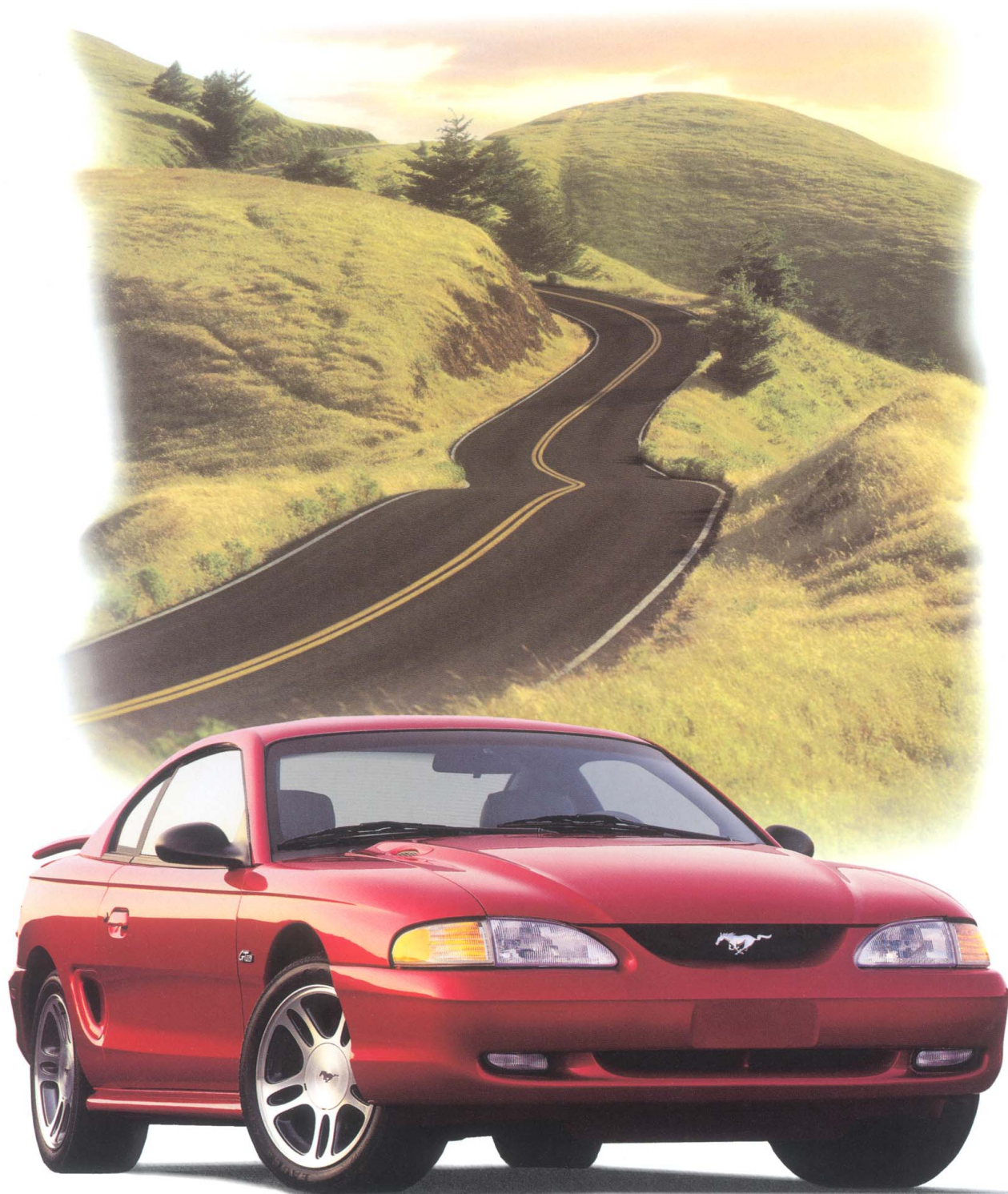




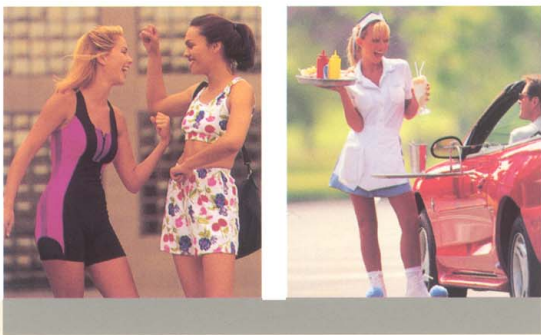
1 9 9 7

MUSTANG





There's nothing like driving a Mustang



THERE'S NOTHING ON THE ROAD QUITE LIKE THE LEGENDARY STYLE AND PERFORMANCE OF FORD
MUSTANG. FEEL MUSTANG GT'S EXHILARATING 215-HP 4.6-LITER SOHC V8 POWER AND AGILE SPORT
HANDLING. EXPERIENCE WHAT COUNTLESS DRIVING ENTHUSIASTS HAVE BEEN ENJOYING SINCE 1964.

MUSTANG GT COUPE in Autumn
Orange Clearcoat Metallic.

MUSTANG GT CONVERTIBLE
in Crystal White Clearcoat.

Some equipment shown on
these pages is optional.

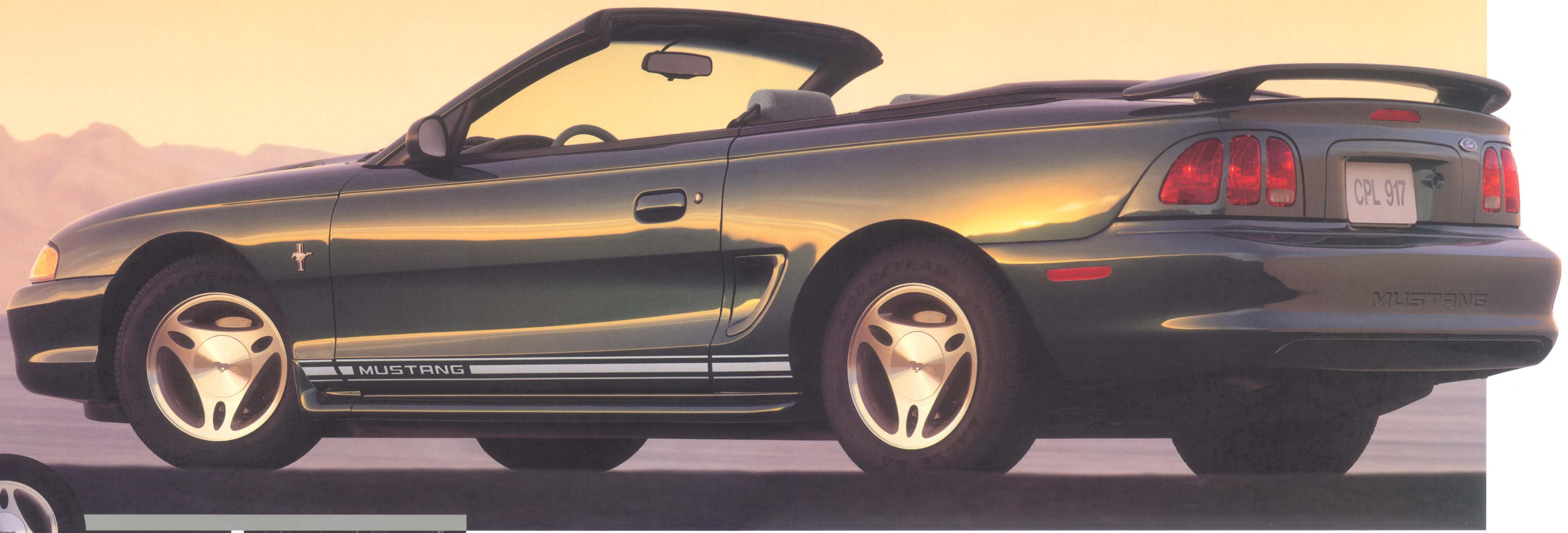




MUSTANG COUPE
in Black Clearcoat.

Make your escape Mustang style

BELOW: MUSTANG CONVERTIBLE
in Pacific Green Clearcoat Metallic.
Some equipment shown, such as the Sport
Appearance Package, is optional.



**THIS BRIGHT MACHINED
CAST ALUMINUM WHEEL**
is part of the optional Sport
Appearance Package.



LEFT: Mustang is powered by a 150-hp
3.8-liter SEFI V6. All Mustangs come with a
standard passive anti-theft system.

FAR LEFT: The available Sport Appearance
Group also includes a rear spoiler
(standard in the GT convertible model).

THERE'S NOTHING LIKE A CAREFREE, FREE-SPIRITED DAY ON THE ROAD, ESPECIALLY WHEN YOU'RE
AT THE WHEEL OF A FORD MUSTANG CONVERTIBLE. POWERED BY A STANDARD 3.8-LITER SEFI V6,
ITS RESPONSIVE PERFORMANCE AND HANDLING WILL QUITE LITERALLY DRIVE YOUR CARES AWAY.

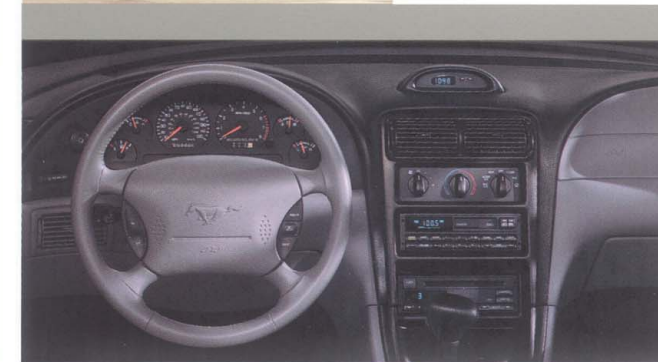
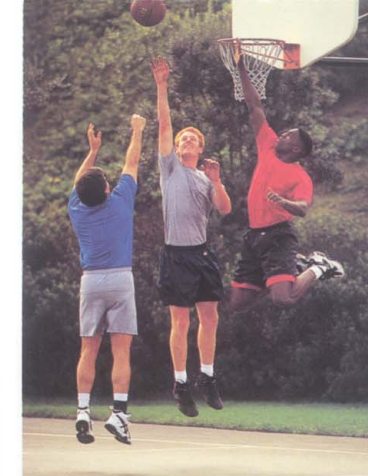


The cockpit of a legendary American sports car

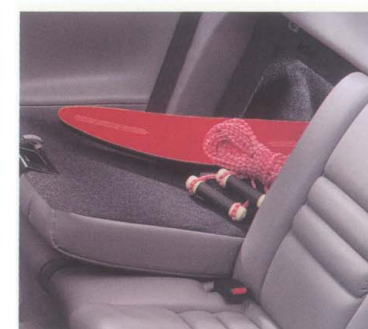


WHILE CLASSIC IN STYLE, MUSTANG'S INTERIOR IS HIGHLY ERGONOMIC IN DESIGN. INSTRUMENTS AND CONTROLS ARE POSITIONED JUST A GLANCE AWAY SO THAT YOU CAN KEEP YOUR ATTENTION ON THE DRIVING TASK AT HAND. THE SEATING IS FIRM AND SUPPORTIVE. MUSTANG ALSO COMES WITH THE SECURE FEELING OF STANDARD DUAL FRONT AIR BAGS (ALWAYS WEAR YOUR SAFETY BELTS).

MUSTANG GT INTERIOR
in Medium Graphite. Some
equipment shown is optional.



THE INSTRUMENT CLUSTER features analog gauges. A tilt steering wheel is standard (leather-wrapped in the GT convertible).



REAR SEATS.
Fold down one or both rear seat backs for added cargo versatility (coupe only).

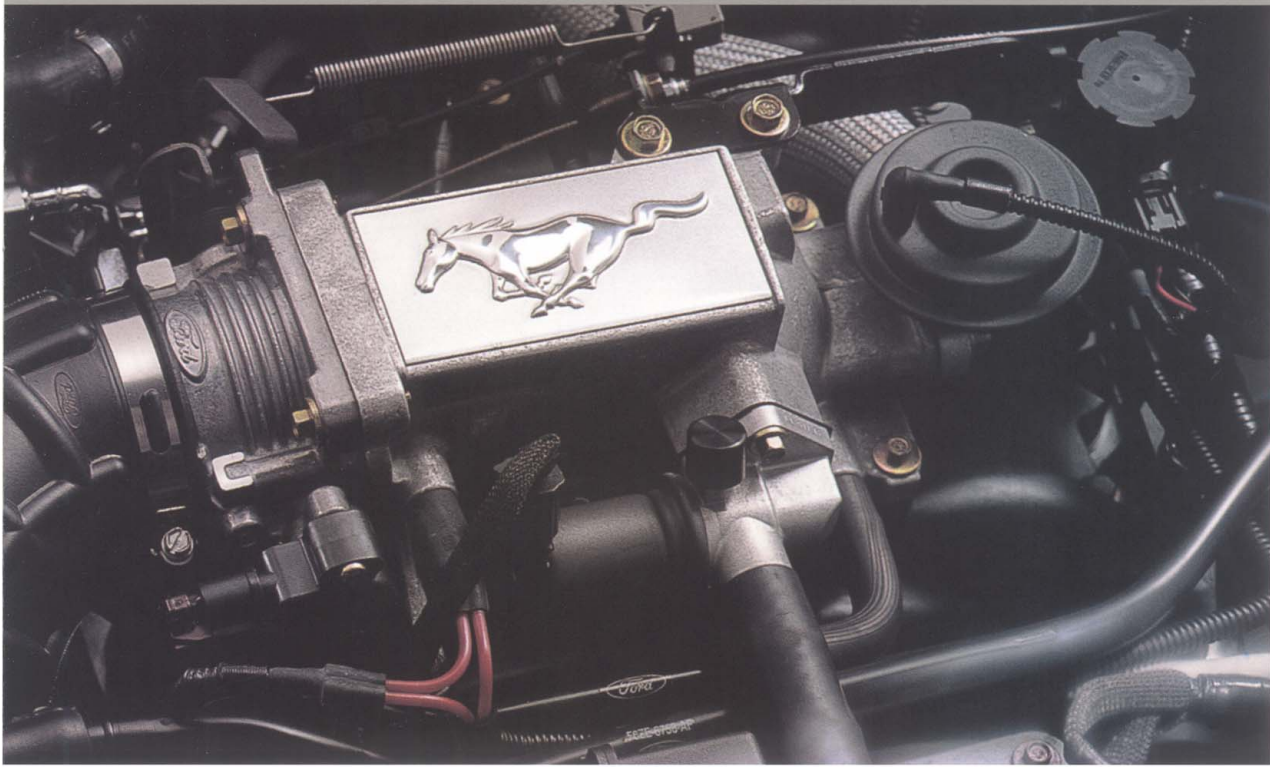


CENTER CONSOLE
with armrest, cup holder, and storage bin with CD and tape storage.



Choose your level of performance: Exciting. Or downright exhilarating.

OPT FOR A MUSTANG WITH RESPONSIVE 3.8-LITER V6 PERFORMANCE OR EXPERIENCE THE ULTIMATE IN MUSTANG POWER AND AGILITY IN A MUSTANG GT WITH ITS HIGH-OUTPUT 4.6-LITER SINGLE OVERHEAD CAM V8, 16" ALUMINUM WHEELS, P225/55ZR16 SPEED-RATED TIRES, AND SPORT-TUNED "QUADRA-SHOCK" REAR SUSPENSION SYSTEM. FOR THE ABSOLUTE BEST IN MUSTANG HANDLING, HAVE YOUR GT EQUIPPED WITH UNIQUE 17" ALUMINUM WHEELS AND P245/45ZR17 TIRES, THE LOWEST-PROFILE DESIGN EVER FITTED TO A MUSTANG.



THE 215-HP 4.6-LITER V8 has a single overhead cam design that contributes to increased horsepower per liter. It can go 100,000 miles without a scheduled tune-up under normal driving conditions with routine fluid and filter changes. What's more, it's equipped with a standard passive anti-theft system.



DUAL FRONT AIR BAGS to supplement the safety belts are standard in both the Mustang and Mustang GT.



PASSIVE ANTI-THEFT prevents ignition unless the special coded key is used. Standard on all Mustangs.



FOUR-WHEEL POWER DISC BRAKES are standard equipment on all Mustangs. A computer-controlled anti-lock brake system is optional.

MUSTANG GT'S SPORT-TUNED SUSPENSION with "quadra-shock" rear system provides directional stability and tight cornering capability.



Mustang

EXTERIOR FEATURES

	MUSTANG		GT	
	241A S	243A S	248A S	249A S
Aerodynamic halogen headlamps	S	S	S	S
Dual electric remote-control mirrors (convex RH mirror)	S	S	S	S
Tinted glass—complete	S	S	S	S
Convertible top – power retractable with semi-hard boot (convertible)	S	S	–	S
Front fog lamps (standard on GT convertible only)	–	–	–	S
Rear spoiler (standard on GT convertible)	O	O	–	P
15" full wheel covers and P205/65TR15 BSW all-season tires	S	S	–	–
16" 5-spoke cast aluminum wheels with locking lug nuts and P225/55ZR16 all-season performance tires	–	–	S	S
15" cast aluminum wheels and P205/65TR15 BSW all-season tires	O	P	–	–
17" aluminum wheels and P245/45ZR17 BSW performance tires	–	–	–	O

OPTION GROUPS

Group 1*	–	P	O	P
Group 2*	–	P	–	P
Group 3† (standard on GT convertible)	–	–	–	P
V6 Sport Appearance Group: 15" bright machined aluminum wheels, rear spoiler, leather-wrapped steering wheel, and lower bodyside stripes	–	O	–	–

SAFETY AND SECURITY

Dynamic side impact protection	S	S	S	S
Driver and front passenger supplemental air bags	S	S	S	S
Passive anti-theft system	S	S	S	S
Perimeter anti-theft system	–	O	O	O
4-wheel disc brakes	S	S	S	S
Anti-lock brake system	O	O	O	P
Remote keyless/illuminated entry system	–	P	O	O

AUDIO SYSTEMS

Electronic AM/FM stereo radio	S	S	S	S
Electronic AM/FM stereo radio with cassette player	P	–	P	–
Electronic AM/FM stereo radio with cassette player, premium sound system	–	P	O	P
MACH 460 electronic AM stereo/FM stereo with cassette player	–	O	–	O
Compact disc player (requires AM/FM stereo/cassette or MACH 460 sound system)	–	O	O	O

SEATING

Cloth bucket seats	S	S	S	S
Sport cloth bucket seats	–	–	–	P
Bucket seats with leather seating surfaces (1 - convertible only)	1	1	–	O**
Power driver's seat	O	P	O	P

COMFORT AND CONVENIENCE

CFC-free air conditioning	P	P	P	P
Speed control	–	P	O	P
Rear window defroster	O	O	O	O
Front floor mats	O	O	O	O

PERFORMANCE

3.8-liter V6/5-speed manual transmission (4-speed automatic optional)	S	S	–	–
4.6-liter V8/5-speed manual transmission (4-speed automatic optional)	–	–	S	S
Optional axle ratio	–	–	O	O
Engine block immersion heater	O	O	O	O

*See Packages 243A and 249A listed at left. †See Package 249A listed at left. **Includes power lumbar support.



Left to right: 15" wheel cover (standard on Mustang); 15" cast aluminum wheel (optional on Mustang); bright machined 15" optional wheel; 16" cast aluminum wheel (standard on GT); 17" cast aluminum wheel (optional on GT).

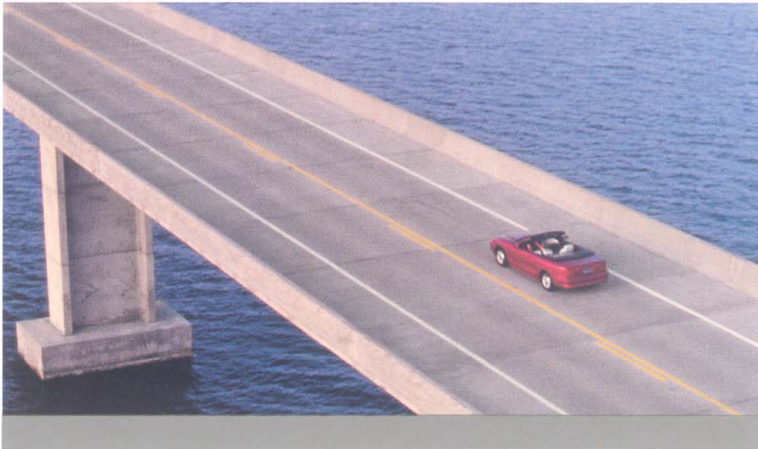
Colors



EXTERIOR PAINT COLORS	INTERIOR TRIM COLORS		
	Saddle	Medium Graphite	Black
Aztec Gold Clearcoat Metallic*	■		■
Autumn Orange Clearcoat Metallic*	■		■
Rio Red Tinted Clearcoat	■	■	■
Laser Red Tinted Clearcoat	■	■	■
Deep Violet Clearcoat Metallic		■	
Moonlight Blue Clearcoat Metallic		■	
Pacific Green Clearcoat Metallic	■	■	
Deep Forest Green Clearcoat Metallic	■	■	
Black Clearcoat	■	■	■
Crystal White Clearcoat	■	■	■

*Mustang GT only. NOTE: Tape stripes in V6 Sport Appearance Group available in white, black or gold. See your dealer for available color combinations.

Ownership experience



ROADSIDE ASSISTANCE PROGRAM. Every new Ford includes the assurance of a 24-hour emergency Roadside Assistance Program provided during the 3-year/36,000-mile bumper-to-bumper warranty. Ask your dealer for complete details on this program which includes such services as fuel delivery, tire change, jump start, or even help when you're locked out of your car.



FORD CREDIT offers a wide variety of financing and leasing programs to qualified buyers which can be arranged right at the dealership. Ask your Ford Dealer for the facts on these programs.



OPTIONAL FORD EXTENDED SERVICE PLANS go beyond the basic 3-year/36,000-mile warranty. Ask your dealer for complete details on the optional plans and for a copy of the limited warranty.



USING YOUR FORD CITIBANK VISA® OR MASTERCARD® could earn you hundreds, even thousands of dollars from Ford toward the purchase or lease of a new Ford, Lincoln or Mercury product.

To apply or get more information, call 1-800-374-7777. Or visit a Ford or Lincoln-Mercury Dealer, or a branch of Citibank.

Your Ford Dealer offers a variety of quality Ford-brand accessories that meet or exceed our strict specifications.

PRODUCT CHANGES AND OPTIONS AVAILABILITY. Following publication of the catalog, certain changes in standard equipment, options, prices and the like, or product delays, may have occurred which would not be included in these pages. Your Ford Dealer is your best source for up-to-date information.

Ford Division reserves the right to change product specifications at any time without incurring obligations.

Options shown or described are available at extra cost and may be offered only in combination with other options or subject to additional ordering requirements or limitations.

For more information, visit our Web site at <http://www.ford.com>



BUILDING A COMPLETE LINE-UP OF QUALITY CARS AND TRUCKS



Aspire



Explorer



Escort



Windstar



Probe



Aerostar



Mustang



Club Wagon



Contour



Econoline



Thunderbird



Taurus



F-Series



Crown Victoria



Expedition



Ranger

